

Nike Golf Tall Long Sleeve Dri-FIT Stretch Tech Polo 604940



Long sleeves elevate this polo to another level of sophistication while Dri-FIT moisture management technology adds unparalleled performance. Stretch fabric for hassle-free swinging motion. Features a flat knit collar and cuffs and a three-button placket. Heat transfer label for tag-free comfort. Dyed-to-match buttons. Side vents. The contrast Swoosh design trademark is embroidered on the lower left sleeve. Made of 5-ounce, 100% polyester Dri-FIT fabric.

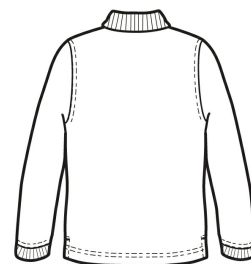
CARE INSTRUCTIONS

Machine wash cold (30c). Wash inside out. Wash with like colors. Do not use Softeners. Do not bleach. Tumble dry low. Do not iron. Do not dry clean. Do not wet clean.

[Tips For Effectively Screen Printing Polyester Fabrics](#)

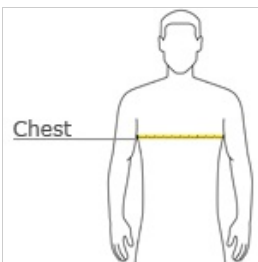


front



back

HOW TO MEASURE






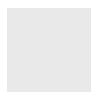
CHEST

With arms down at sides, measure around the upper body, under arms and over the fullest part of the chest.

SIZE CHART

	LT	XLT	2XLT	3XLT	4XLT
Chest	41-44	44-47	47-50	50-53	53-56

COLOR INFORMATION

				
Black PMS PROCESS BLACK C	Blue Sapphire	Midnight Navy PMS 2767 C	Varsity Red	White PMS WHITE